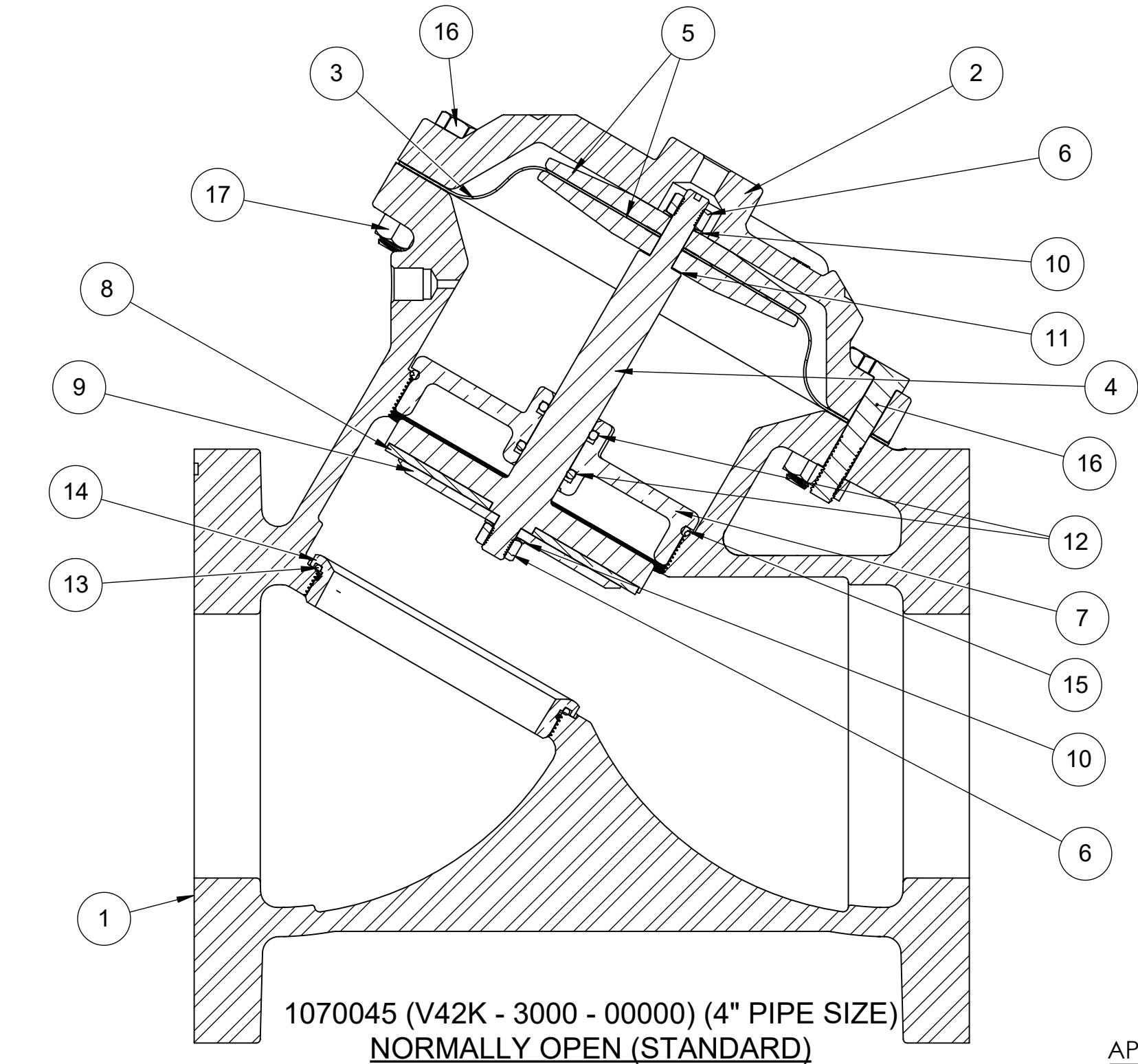
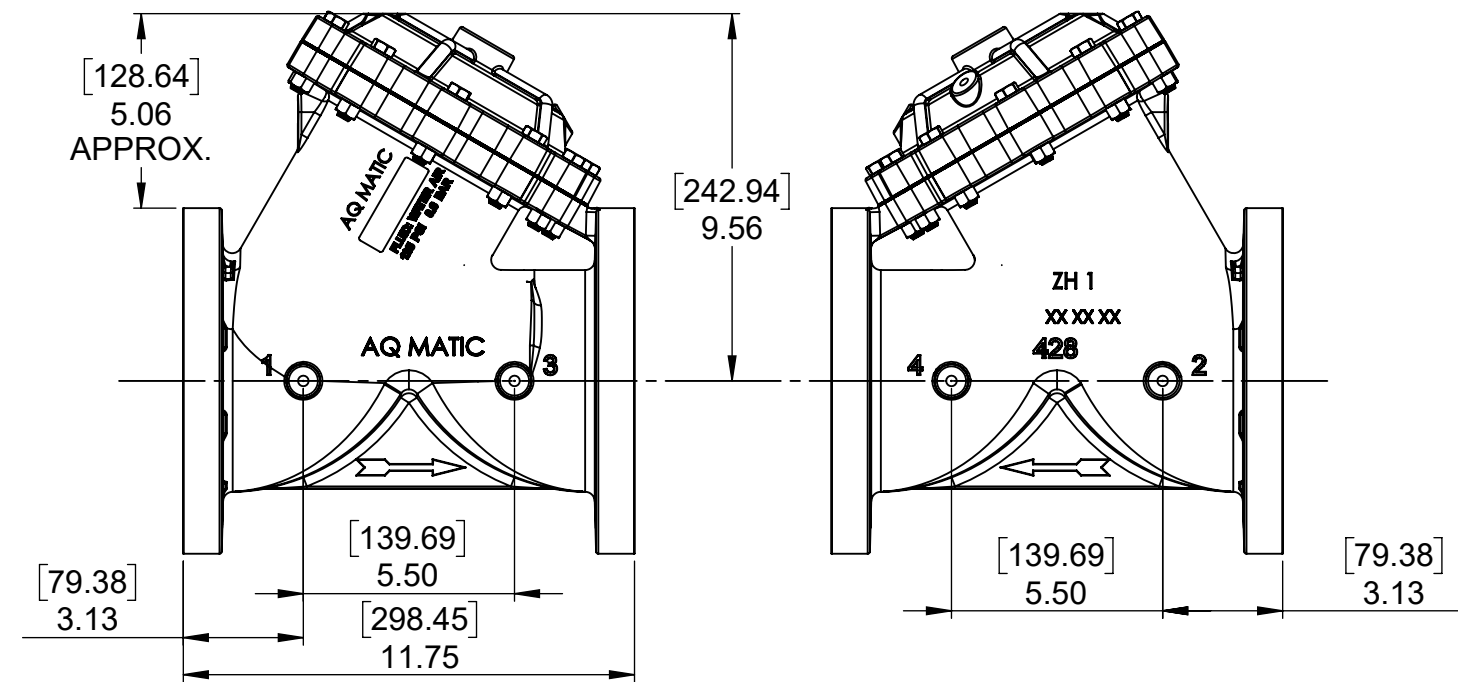


- NOTE:
- AMERICAN NATIONAL STANDARD TAPER PIPE
THREADS (NPT) PER ANSI B2.1-1968
 - VALVES AVAILABLE WITH B.S.P. END CONNECTIONS.

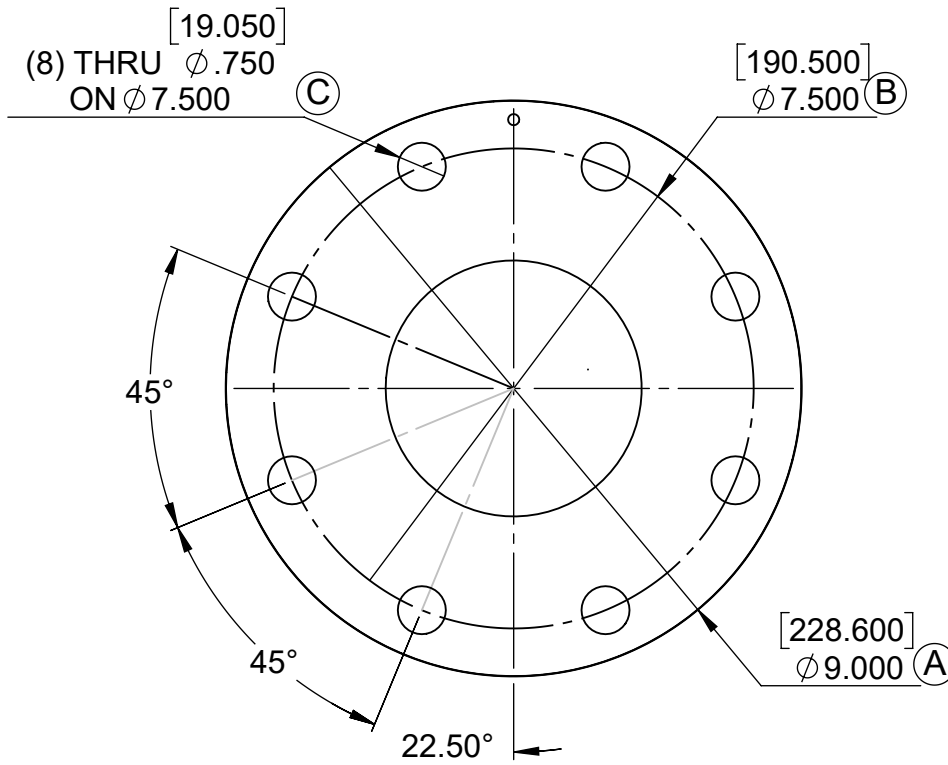


1070045 (V42K - 3000 - 00000) (4" PIPE SIZE)
NORMALLY OPEN (STANDARD)

REPAIR PARTS KITS			
DESCRIPTION	PART NO.		
DIAPHRAGM & SEALS KIT CONSISTS OF ITEM NO'S 3, 6(2), 8, 10(2), 11, 12(2), 13, 15	1070073 (428-RA)	1070086 (428-RAE)	1070098 (428-RAV)
	BUNA N INCLUDES DIAPHRAGM 1074557 (428-FB)	E.P.D.M. INCLUDES DIAPHRAGM 1074557 (428-FB)	FKM INCLUDES DIAPHRAGM 1074559 (428-FV)
INT. PARTS KIT (NORM. OPEN) CONSISTS OF STANDARD ITEM NO'S 4, 5(2), 7, 9, 10(2)	1070123 (428-RF)		
SEAT (ITEM NO. 14)	1074585 (428-MAO)		

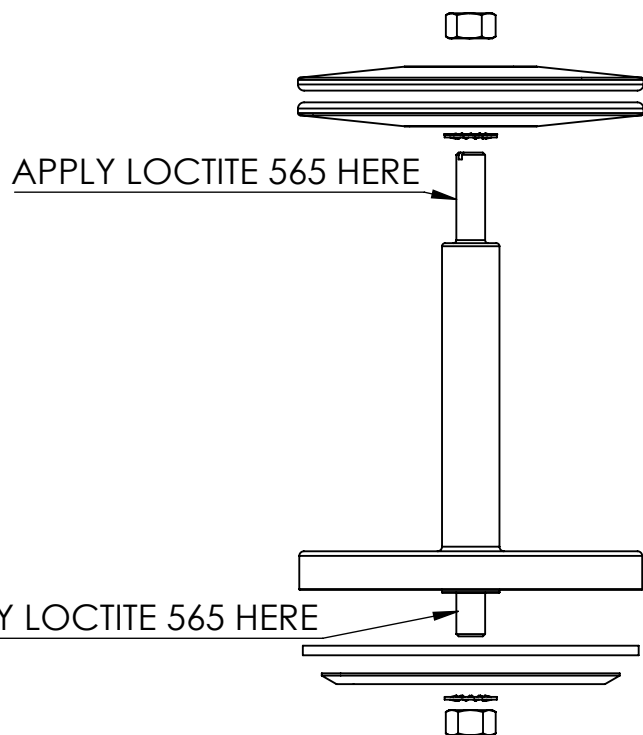
ASSEMBLY TOOLS	
DESCRIPTION	PART NO.
FOR INSTALLATION & REMOVAL OF SHAFT GUIDE (ITEM #7) (NOT SHOWN)	1-1/4" HEX SOCKET

TORQUE TABLE		
ITEM #	DESCRIPTION	TORQUED TO (+/- 10%)
6	UPPER NUT	140 IN/LBS
6	LOWER NUT	215 IN/LBS
7	GUIDE, SHAFT	500 IN/LBS (41.6 FT/LBS)
14	SEAT	400 IN/LBS (33 FT/LBS)
16 & 17	NUT, & CAP SCREW	140 IN/LBS



AMERICAN FLANGE PER ASME/ANSI B16.1 CLASS 125
METRIC FLANGE PER BS EN1092-2, ISO 7005-2

FLANGE STYLE	A	B	C
AMERICAN	9.000	7.500	.750
METRIC	229 MM	180 MM	18 MM



DO NOT APPLY TO O-RING SEALS

THIS DOCUMENT IS SOLELY THE PROPERTY OF AQ-MATIC
REPRODUCTION, USE DISCLOSURE, OR
TRANSMISSION OF THIS DOCUMENT OR DETAILS CONTAINED
HEREIN, IN PART OR IN WHOLE, IS PROHIBITED WITHOUT
THE WRITTEN CONSENT OF AQ-MATIC ENGINEERING. THIS
DOCUMENT AND ANY COPIES SHALL BE
RETURNED TO AQ-MATIC UPON WRITTEN
REQUEST.

DO NOT SCALE DRAWING. DIMS. ARE IN INCHES [mm]
INTERPRET DIMS AND TOLERANCES PER ASME Y14.5M -1994
UNLESS OTHERWISE SPECIFIED:
CORNER FILLETS R.005-.020 [127-.508]
TOLERANCES:
ANGLES: \pm 1°
1 PLACE .XX: \pm .015 [0.38]
2 PLACE .XXX: \pm .01 [0.3]
3 PLACE .XXX: \pm .005 [0.13]

THE COMPONENT, PART, OR ASSEMBLY DESCRIBED IN THIS DOCUMENT MUST COMPLY WITH THE EU (EUROPEAN UNION) DIRECTIVE:
RoHS DIRECTIVE 2011/65/EC.

THIRD ANGLE PROJECTION	
APPROVALS	DATE
DRAWN TRK	10/27/20
CHECKED BY	
APPROVED	

SEE REVERSE SIDE FOR
CONFIGURATION OPTIONS

Buy AQ Matic.com

CATALOG SHEET, 428
DIAPHRAGM VALVE STANDARD MODEL

C DWG NO. 1077618 REV. T

SCALE SOLIDWORKS FORMAT SHEET 1 OF 1

REVISIONS					
ECN	REV.	DESCRIPTION		DATE	APP'D
1588	R	REVISED COMPONENTS, UPDATED CATALOG SHEET		1/15/21	
1951	S	CORRECTIONS TO CATALOG SHEET		10/6/21	
2149	T	CORRECTIONS TO CATALOG SHEET		10/6/21	
ITEM NO.	DESCRIPTION		STD	PART NUMBER	QTY.
1	CAST BODY 4"	CAST IRON	*	1074522 (428-A)	1
	BODY 4.00", ISO FLG			1074523	
2	CAP, 428, NPT	CAST IRON	*	1074532 (428-C)	1
3	DIAPHRAGM	BUNA N	*	1074557 (428-FB)	1
		FKM		1074559 (428-FV)	
4	NORMALLY OPEN COMBINATION SHAFT	SS	*	4510302-01	1
5	DIAPHRAGM PLATES	SS	*	43759	2
6	HEX NUT (3/8 - 24)	SS	*	3001990 (NUS-0017)	2
7	SHAFT GUIDE (ASSM. TOOL REQ.)	BRASS	*	1074563 (428-GO)	1
8	DISC	BUNA	*	1074568 (428-J)	1
		EPDM		1074570 (428-JE)	
		FKM		1074573 (428-JV)	
		HYCAR		1074571 (428-JH)	
9	DISC PLATE	SS	*	43734 (428-KA)	1
10	LOCKWASHER, 3/8", INTERNAL		*	1073591 (WAS-0008)	2
11	GASKET, COPPER		*	1073950 (200-LL)	1
12	O-RING 2-210	BUNA N	*	1071665 (ORA-210TC)	2
		EPDM		1242718 (ORE-210TC)	
		FKM		1242394 (ORV-210TC)	
13	O-RING, 2-156	BUNA N	*	1071697 (ORA-156)	1
		EPDM		1071739	
		FKM		1071811	
14	SEAT, BRASS (ASSM. TOOL REQ.)	BRASS	*	1074585 (428-MAO)	1
15	O-RING, 2-245	BUNA N	*	1071711 (ORA-245)	1
		EPDM		1071759	
		FKM		1071832	
16	HEX SCREW, 3/8"-16	PLATED STEEL	*	1072406 (SCZ-0027)	11
17	HEX NUT, 3/8" - 16	PLATED STEEL	*	1071658 (NUZ-0014)	11

D

C

B

A

D

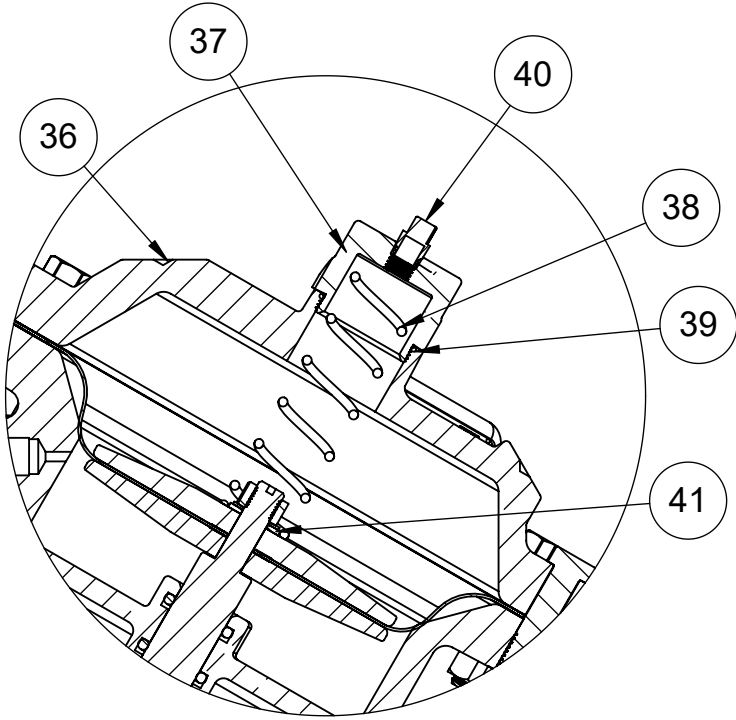
C

B

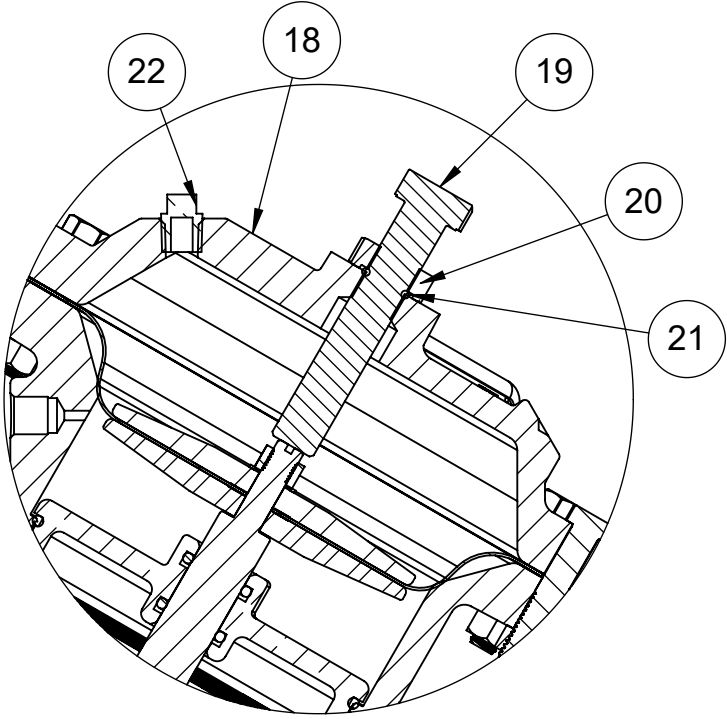
A

TORQUE TABLE		
ITEM #	DESCRIPTION	TORQUED TO (+/- 10%)
20	NUT, LIMIT STOP	140 IN/LBS
31	PI ROD GUIDE	140 IN/LBS
33	NUT, TOP, 428, PI	140 IN/LBS
37	NUT, SPRG RETAINER	140 IN/LBS

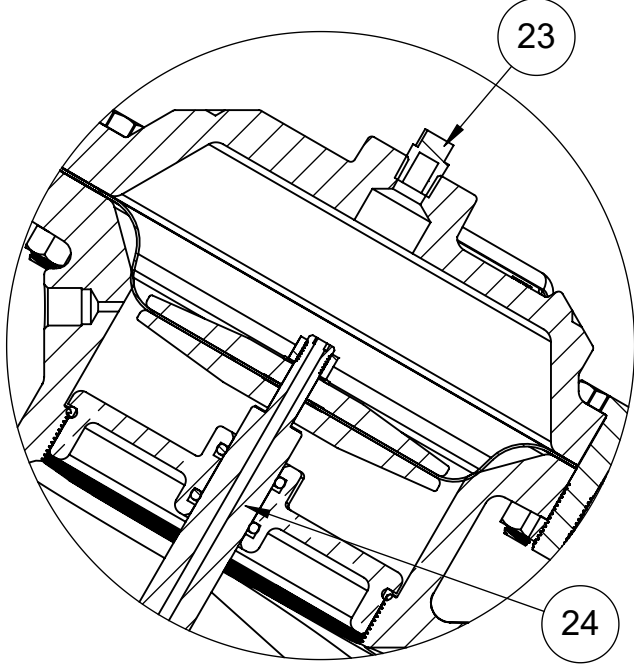
REVISIONS				
ECN	REV.	DESCRIPTION	DATE	APP'D
		SEE SHEET 1 FOR NOTES		



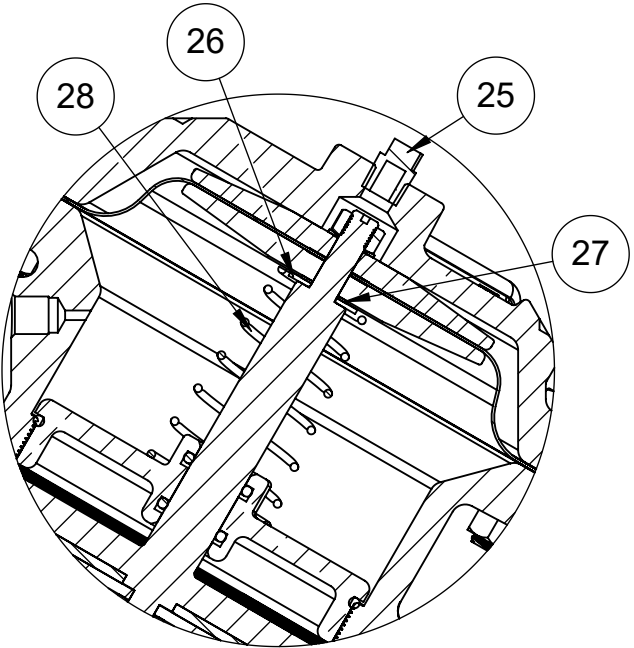
1073148 (V42K-3002-00000)
SPRING ASSIST CLOSED



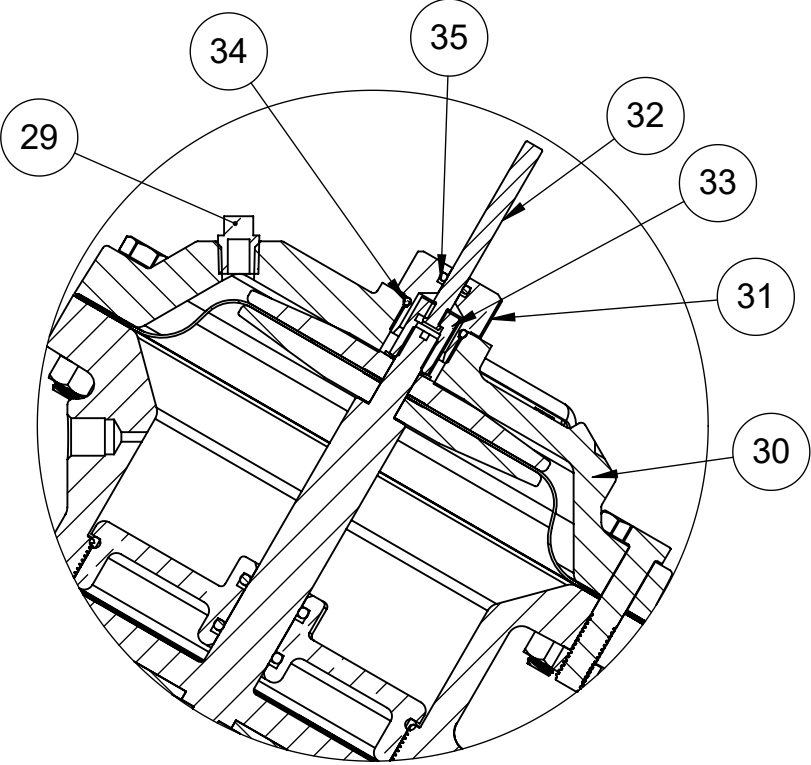
1073151 (V42K-3010-00000)
LIMIT STOP



1073158 (V42K-3030-00000)
NORMALLY CLOSED



1073146 (V42K-3001-00000)
SPRING ASSIST OPEN



1073156 (V42K-3021-00000)
POSITION INDICATOR

REPAIR PARTS KITS	
DESCRIPTION	PART NO.
INT. PARTS KIT (LIMITED STOP) CONSISTS OF STANDARD ITEM NO'S 19, 20, 21	1074583 (428-LS)
INT. PARTS KIT (NORM. CLOSED) CONSISTS OF STANDARD ITEM NO'S 5(2), 7, 9, 10(2), 24	1070134 (428-RG)
INT. PARTS KIT (SPRING ASSIST CLOSED) CONSISTS OF STANDARD ITEM NO'S 38, 39, 41	1074602 (428-SC)
INT. PARTS KIT (SPING ASSIST OPEN) CONSISTS OF STANDARD ITEM NO'S 26, 27, 28	1074604 (428-SO)
INT. PARTS KIT (POSTION INDICATOR)CONSISTS OF STANDARD ITEM NO'S 10(2), 31 THRU 35	1074591 (428-PI)

CONVERSION KITS	
DESCRIPTION	PART NO.
CONVERSION KIT (LIMITED STOP) CONSISTS OF STANDARD ITEM NO'S 18, 19, 20, 21	1074584 (428-LSC)
CONVERSION KIT (SPRING ASSIST CLOSED) CONSISTS OF STANDARD ITEM NO'S 36 THRU 41	1074603 (428-SCC)
CONVERSION KIT (SPRING ASSIST OPEN) CONSISTS OF STANDARD ITEM NO'S 26, 27, 28	1074606 (428-SOC)
CONVERSION KIT (POSITION INDICATOR) CONSISTS OF STANDARD ITEM NO'S 10(2), 29 THRU 35	1074592 (428-PIC)

NOTE:

- SPRING ASSIST CLOSED MODEL CANNOT BE COMBINED WITH LIMITED STOP OR POSITION INDICATOR MODELS.
- VALVES AVAILABLE WITH B.S.P. END CONNECTIONS.


SEE REVERSE SIDE FOR
STANDARD NORMALLY OPEN MODEL

THIS DOCUMENT IS SOLELY THE PROPERTY OF AQ-MATIC REPRODUCTION, USE DISCLOSURE, OR TRANSMISSION OF THIS DOCUMENT OR DETAILS CONTAINED HEREIN, IN PART OR IN WHOLE, IS PROHIBITED WITHOUT THE WRITTEN CONSENT OF AQ-MATIC ENGINEERING. THIS DOCUMENT AND ANY COPIES SHALL BE RETURNED TO AQ-MATIC UPON WRITTEN REQUEST.

DO NOT SCALE DRAWING. DIMS. ARE IN INCHES [mm]
INTERPRET DIMS AND TOLERANCES PER ASME Y14.5M -1994
UNLESS OTHERWISE SPECIFIED:
CORNER FILLETS R.005-.020 [127-.508]
TOLERANCES:
ANGLES: ± 1°
1 PLACE .X: ± .100 [2.54]
2 PLACE .XX: ± .010 [0.25]
3 PLACE .XXX: ± .005 [0.13]

THE COMPONENT, PART, OR ASSEMBLY DESCRIBED IN THIS DOCUMENT MUST COMPLY WITH THE EU (EUROPEAN UNION) DIRECTIVE: RoHS DIRECTIVE 2011/65/EC.

THIRD ANGLE PROJECTION	
APPROVALS	DATE
DRAWN TRK	10/27/20
CHECKED BY	
APPROVED	



CATALOG SHEET, 428
DIAPHRAGM VALVE STANDARD MODEL

SIZE C DWG NO. 1077618 REV. T

SCALE 1:5 SOLIDWORKS FORMAT SHEET 2 OF 2