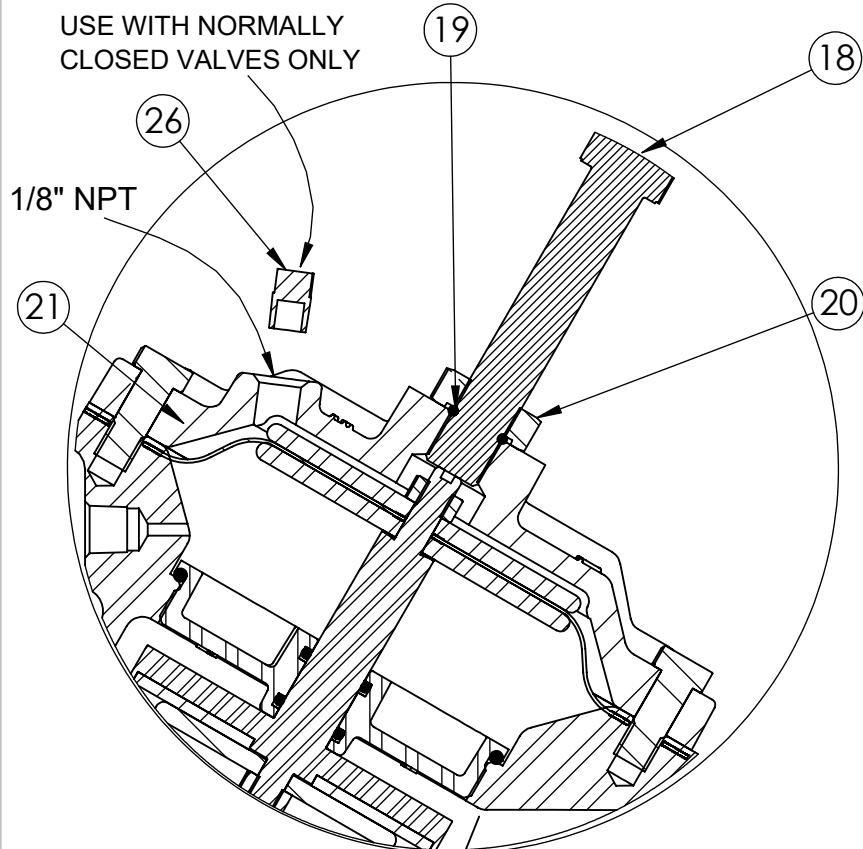


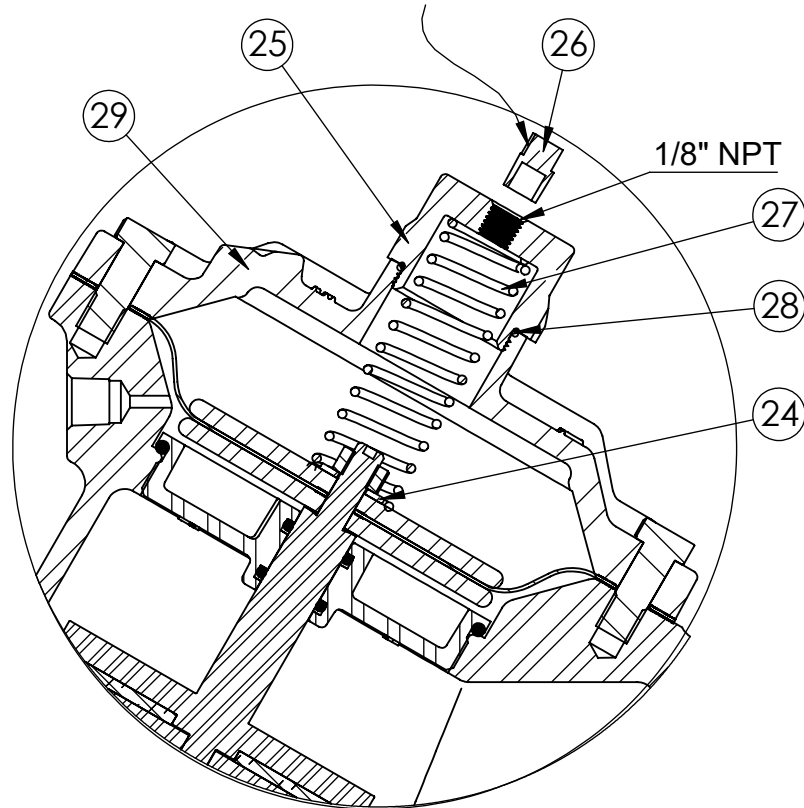
USE WITH NORMALLY CLOSED VALVES ONLY



1073052 (V42J-0010-00000) (THREADED)
1073103 (V42J-3010-00000) (FLANGED)

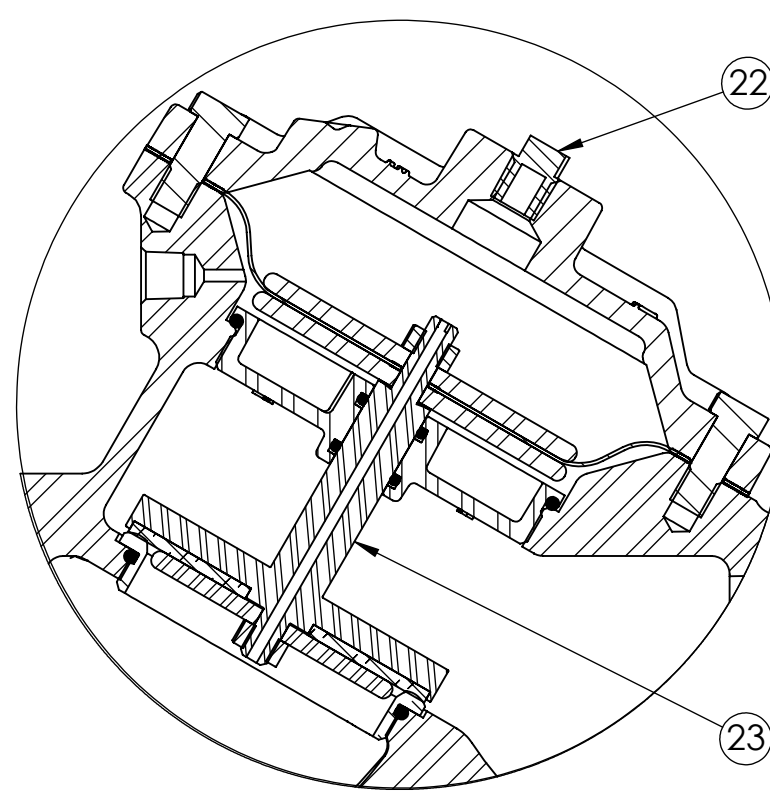
LIMIT STOP

USE WITH NORMALLY CLOSED VALVES ONLY



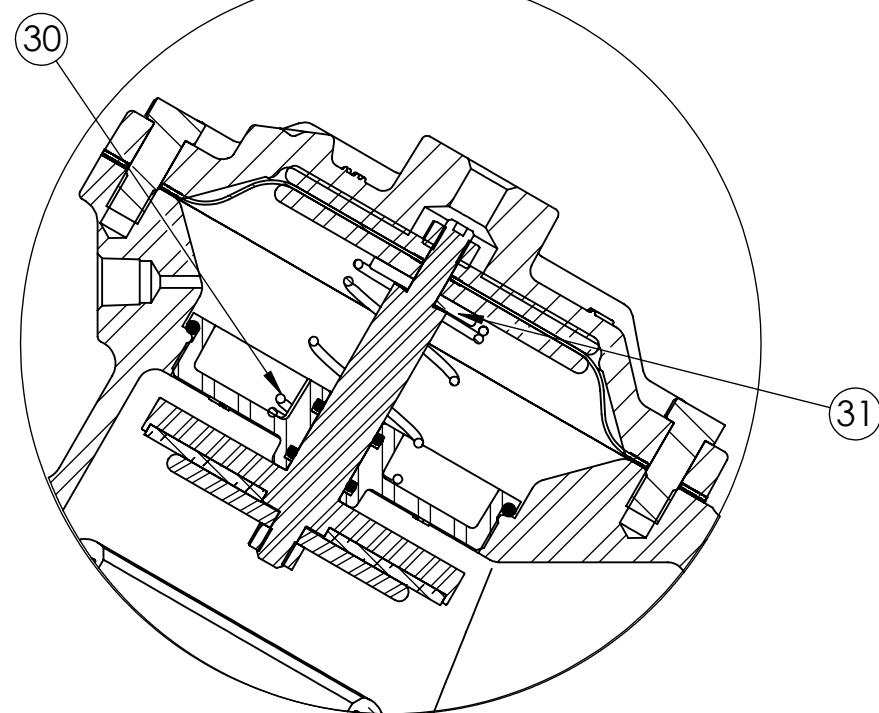
1073047 (V42J-0002-00000) (THREADED)
1073100 (V42J-3002-00000) (FLANGED)

SPRING ASSIST CLOSED



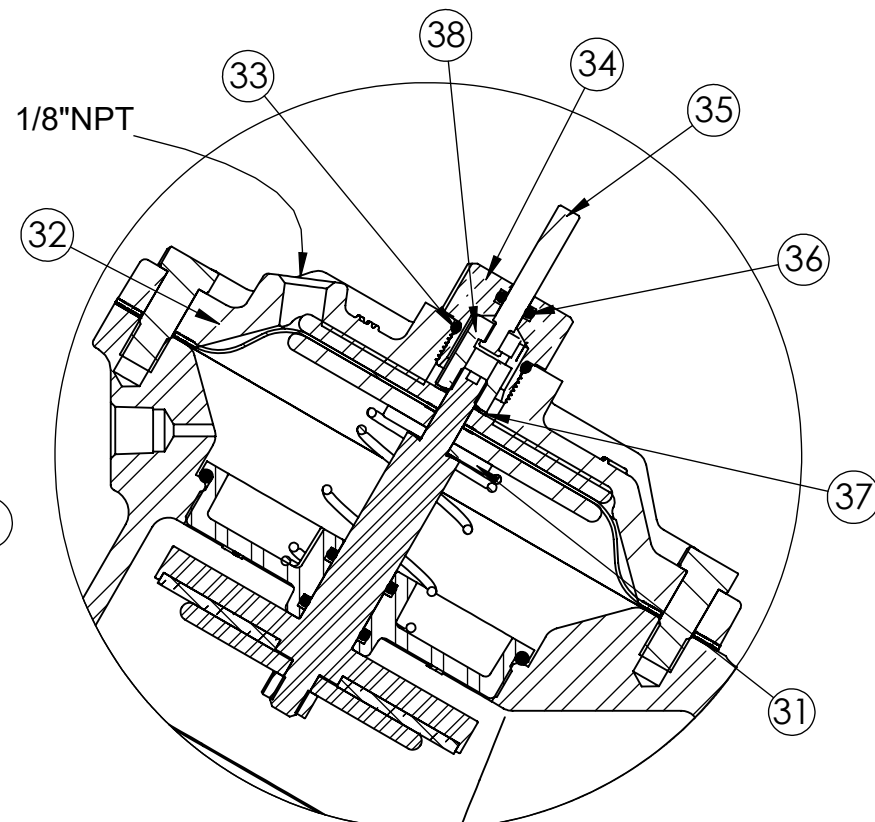
1073055 (V42J-0030-00000) (THREADED)
1073113 (V42J-3030-00000) (FLANGED)

NORMALLY CLOSED



1073045 (V42J-0001-00000) (THREADED)
1073097 (V42J-3001-00000) (FLANGED)

SPRING ASSIST OPEN



1073054 (V42J-0021-00000) (THREADED)
1077374 (V42J-3021-00000) (FLANGED)

POSITION INDICATOR

NOTE:
1. SPRING ASSIST CLOSED MODEL CANNOT BE COMBINED WITH LIMIT STOP OR POSITION INDICATOR MODELS.
2. VALVES AVAILABLE WITH B.S.P. END CONNECTIONS.

REVISIONS

ECN	REV.	DESCRIPTION	DATE	APP'D
		SEE PAGE 1 FOR DOCUMENT CHANGES		

TORQUE TABLE

ITEM#	DESCRIPTION	TORQUE TO (+/-10%)
20	NUT, LIMIT STOP	120 IN/LBS
25	NUT, RETAINER	140 IN/LBS
34	PI, ROD GUIDE	140 IN/LBS
38	TOP NUT	120 IN/LBS

ITEM NO.	DESCRIPTION	STD	PART NUMBER	QTY.
LIMIT STOP MODEL				
18	SCREW, 5/8-18X3.50 HEX HD,	*	1072365 (SCS-0043)	1
19	O-RING,2-112,NITRILE	*	1071690 (ORB-112)	1
20	NUT, LIMIT STOP	*	1074434 (426-U)	1
21	CAP, 427, LS, BRASS		1074465 (427-CCCB)	1
	CAP, 427,LS, CAST IRON	*	1074462 (427-CCC)	
NORMALLY CLOSED MODEL				
22	MALE PIPE PLUG 1/4 NPT, PLATED	*	1071918 (PLZ-0008)	1
	MALE PIPE PLUG 1/4 NPT, BRASS		1071904 (PLB-0009)	
23	COMBINATION SHAFT, 427, N.C.	*	4510301-02	1
SPRING ASSIST CLOSED MODEL				
24	WASHER,	*	1074083 (421-AH)	1
25	NUT, SPRG RTNR,425 & 465,SS	*	1074433 (426-TTS)	1
26	MALE PIPE PLUG 1/8 NPT, PLATED	*	1071917	1
	MALE PIPE PLUG 1/8 NPT, BRASS		1071903	
27	SPRING,COMPRESSION,316SS	*	1078688 (426-SS)	1
28	O-RING,2-025,NITRILE	*	1071677 (ORB-025)	1
29	CAP, 427, SPRING ASSIST,CI	*	1074460 (427-CC)	1
	CAP, 427,SPRING ASSIST, CB		1074461 (421-CCB)	
SPRING ASSIST OPEN MODEL				
30	SPRING, COMPRESSION	*	1078692 (426-S)	1
31	CENTERING WASHER, BRASS	*	1074436	1
POSITION INDICATOR MODEL				
32	CAP, 427,CI,NPT,PI	*	1074468 (427-CF)	1
	CAP, 427, NPT, PI, CB		1074469 (427-CFB)	
33	O-RING,2-116,NITRILE	*	1071692 (ORB-116)	1
34	PI ROD GDE, V42, BRASS	*	1074121 (421-GF)	1
35	SHAFT,427,SS,MACH	*	1074510 (427-GF)	1
36	O-RING,2-106,NITRILE,TFLN CTD	*	1071688 (ORB-108TC)	1
37	LOCKWASHER,5/16",INTRNL TOOTH	*	1073590 (WAS-0007)	1
38	TOP NUT, BRASS	*	1074332 (425-TB)	1

CONVERSION KITS	
DESCRIPTION	PART NO.
CONVERSION KIT (LIMIT STOP) CONSISTS OF STANDARD ITEM NO'S 18, 19, 20, 21	1074502 (427-LSC)
CONVERSION KIT (SPRING ASSIST CLOSED) CONSISTS OF STANDARD ITEM NO'S 24 THRU 29	1074519 (427-SCC)
CONVERSION KIT (SPRING ASSIST OPEN) CONSISTS OF STANDARD ITEM NO'S 16, 30, 31	1074521 (427-SO)
CONVERSION KIT (POSITION INDICATOR) CONSISTS OF STANDARD ITEM NO'S 32 THRU 38	1074509 (427-PIC)

REPAIR PARTS KITS	
DESCRIPTION	PART NO.
INT. PARTS KIT (LIMIT STOP) CONSIST OF STANDARD ITEM NO'S 18, 19, 20	1074501 (427-LS)
INT. PARTS KIT (NORM. CLOSED) CONSIST OF STANDARD ITEM NO'S, 10, 14, 15(2), 23	1070133 (427-RG)
INT. PARTS KIT (SPRING ASSIST CLOSED) CONSIST OF STANDARD ITEM NO'S 24, 27, 28	1081565 (427-SC)
INT. PARTS KIT (SPRING ASSIST OPEN) CONSIST OF STANDARD ITEM NO'S 16, 30, 31	1074521 (427-SO)
INT. PARTS KIT (POSITION INDICATOR) CONSIST OF STANDARD ITEM NO'S 33 THRU 38	1074508 (427-PI)

THIS DOCUMENT IS SOLELY THE PROPERTY OF AQ-MATIC REPRODUCTION, USE DISCLOSURE, OR TRANSMISSION OF THIS DOCUMENT OR DETAILS CONTAINED HEREIN, IN PART OR IN WHOLE, IS PROHIBITED WITHOUT THE WRITTEN CONSENT OF AQ-MATIC ENGINEERING. THIS DOCUMENT AND ANY COPIES SHALL BE RETURNED TO AQ-MATIC UPON WRITTEN REQUEST.

INTERPRET DIMENSIONS AND TOLERANCES PER ASME Y14.5M -1994

UNLESS OTHERWISE SPECIFIED: DIMENSIONS ARE IN INCHES (mm) CORNER FILLETS R.005-.020 [127-508] TOLERANCES: ANGLES: ±1° 1 PLACE .X: ±.100 [2.54] 2 PLACE .XX: ±.010 [0.25] 3 PLACE .XXX: ±.005 [0.13]

THE COMPONENT OR PRODUCT DESCRIBED IN THIS DOCUMENT MUST COMPLY WITH RoHS 3 EU (EUROPEAN UNION) DIRECTIVE 2015/863

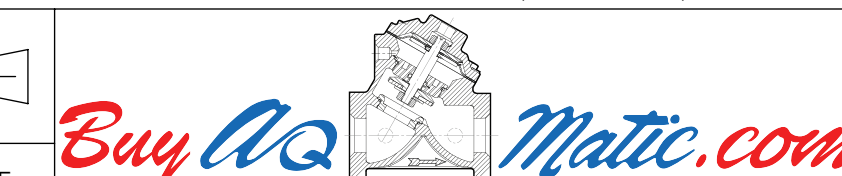
THIRD ANGLE PROJECTION

APPROVALS

DRAWN TRK

CHECKED BY

APPROVED



DESCRIPTION CATALOG SHEET, 427 DIAPHRAGM VALVE STANDARD MODELS

SIZE C DWG NO. 1077617 REV. V

SCALE 1:5 SOLIDWORKS FORMAT SHEET 2 OF 2