

ASSEMBLY TOOLS

DESCRIPTION	PART NO.
LIMIT STOP TOOL (NOT SHOWN)	1073556

NOTES:

- CONNECTORS NOT FURNISHED WITH VALVE.
SEE DWG. NO. 1078165 FOR FEMALE SOCKET WELD CONNECTORS.
- ITEM NO. 19 (P/N 1076766) USED ONLY FOR SEALS KITS.

REVISIONS

REV	ECN	DESCRIPTION	DATE	APP'D
H		REDRAWN IN SOLIDWORKS: 1-REM'D: BUTYL O-RINGS, 2-REM'D: TEFLON COATED O-RINGS	4/17/2014	TJM
J		1-ITEM #11 - REM'D: FKM-1073400	11/12/2015	TJM
K	1001	AQ MATIC UPDATE & VERIFIED PART NUMBERS	1/16/2017	MGS
L	1286	PUT LOGO ON VALVE BODY, CORRECT MINOR ERRORS	8/16/2018	KJB
M	1867	REDRAWN, REM'D OBS. P/N 1073557, REM'D OBS. P/N 1071833, REM'D P/N'S 1071787, 1071791, ADD'D MODEL NO'S, CORRECTED MODEL NO FOR 1071347, 1076766 INCLUDED IN SEALS KITS	4/2/2021	PMJ
N	1979	MODEL NUMBERS INCLUDED, P/N 1073434 REPLACED WITH 4510754	12/10/2021	PMJ

ITEM NO.	PART NO	MODEL	DESCRIPTION	QTY.
1	1073395	V535-080K	NUT, SOCKET RETAINING, 535 PIPE	2
2	1071752	ORE-231	O-RING, 2-231	2
	1071824	ORV-231		
3	1073407	V535-410K	BODY, 535, VALVE	1
4	1073396	V535-093	NUT, DISC RETAINING, 535	1
5	1073401	V535-110	DISC, 535	1
	1073403	V535-112		
6	1073416	V535-500	HOLDER, DISC, 535	1
7	1073413	V535-491	GUIDE, SHAFT, 535	1
8	1071753	ORE-232	O-RING, 2-232	2
	1071825	ORV-232		
9	4510754	V535-593	RING, RETAINING, 537	1
10	1073425	V535-551K	DIAPHRAGM, SUPPORT, K535	2
11	1071712	ORB-248	O-RING, 2-248	2
12	1073386	V535-045	PLATE, DIAPHRAGM, LWR, 535	1
13	1071745	ORE-212	O-RING, 2-212	4
	1071816	ORV-212		
14	1073439	V535-702	ASSEMBLY, SHAFT, 535	1
15	1073384	V535-040	PLATE, DIAPHRAGM, UPR, 535	1
16	1073382	V535-020K	CAP, K535	1
17	1073399	V535-100	DIAPHRAGM, 535	1
18	1073383	V535-030K	NUT, RETAINING, 535	1

REPAIR PARTS KITS

DESCRIPTION	PART NO.	MODEL NO.
DIAPHRAGM & SEALS KIT CONSISTS OF ITEM NO'S 2 (X2), 5, 8 (X2), 11 (X2), 12 (X4), 17, 19	1070320	EPDM SEALS & BUNA N DIAPHRAGM
	1082191	FKM SEALS & BUNA N DIAPHRAGM
INT. PARTS KIT CONSISTS OF ITEM NO'S 4, 6, 7, 9, 10 (X2), 13, 14, 15	1070344	K535-RF

1070312 (K535-X200-14000)
NORMALLY OPEN (STANDARD)

SEE REVERSE SIDE FOR CONFIGURATION OPTIONS.

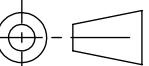
THIS DOCUMENT IS SOLELY THE PROPERTY OF AQ-MATIC REPRODUCTION, USE DISCLOSURE, OR TRANSMISSION OF THIS DOCUMENT OR DETAILS CONTAINED HEREIN, IN PART OR IN WHOLE, IS PROHIBITED WITHOUT THE WRITTEN CONSENT OF AQ-MATIC ENGINEERING. THIS DOCUMENT AND ANY COPIES SHALL BE RETURNED TO AQ-MATIC UPON WRITTEN REQUEST.

INTERPRET DIMENSIONS AND TOLERANCES PER ASME Y14.5M -1994

UNLESS OTHERWISE SPECIFIED:
DIMENSIONS ARE IN INCHES (mm)
CORNER FILLETS R.005-.020 (.127-.508)
TOLERANCES:
ANGLES : ± 1°
1 PLACE .X: ± .100 (2.54)
2 PLACE .XX: ± .010 (0.25)
3 PLACE .XXX: ± .005 (0.13)

THE COMPONENT OR PRODUCT DESCRIBED IN THIS DOCUMENT MUST COMPLY WITH RoHS 3 EU (EUROPEAN UNION) DIRECTIVE 2015/863

THIRD ANGLE PROJECTION



APPROVALS

DATE

DRAWN

PMJ

CHECKED BY

APPROVED



DESCRIPTION
CATALOG SHEET, 535, VALVE

SIZE

C

DWG NO.

1077690

REV.

N

SCALE

1:4

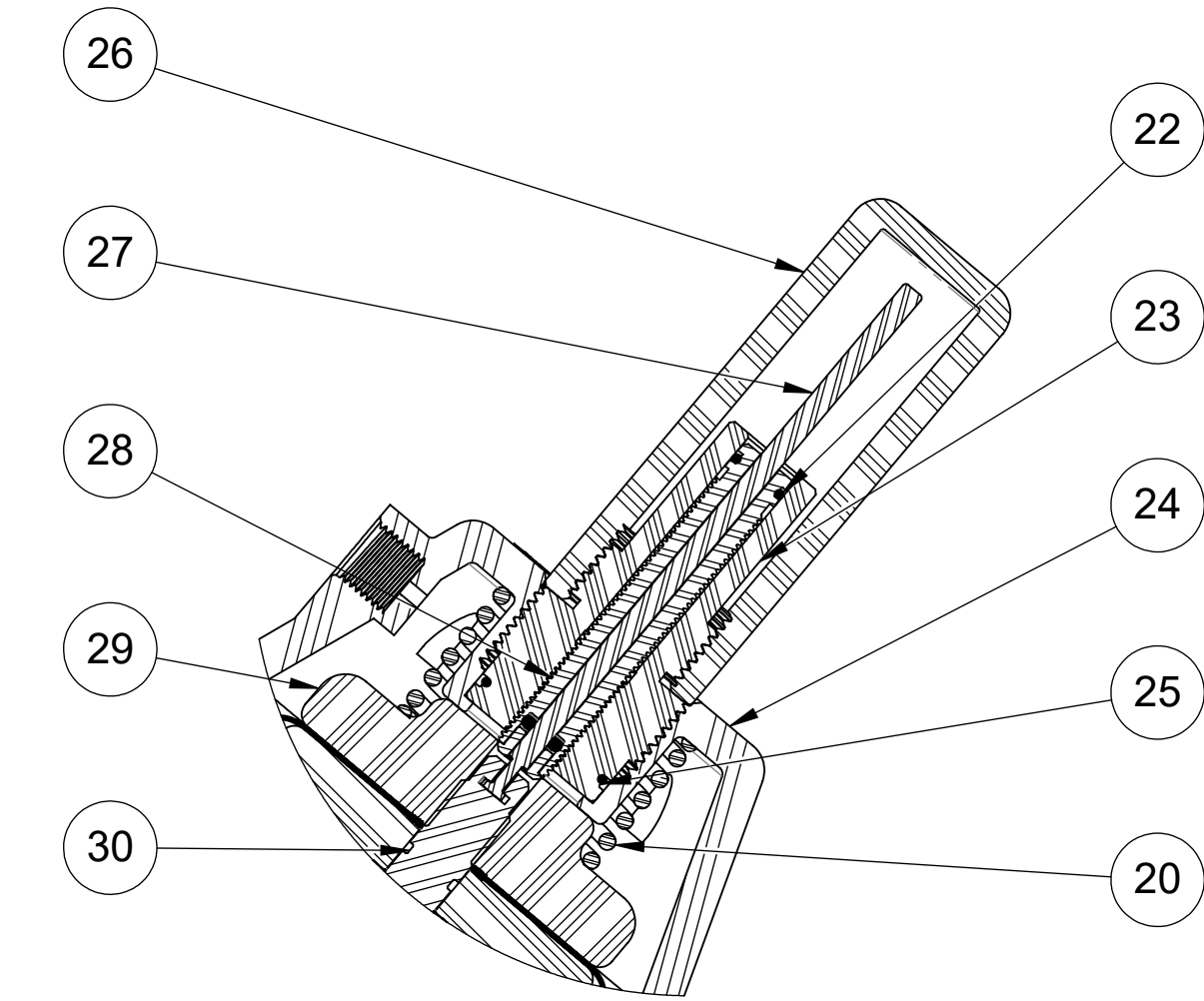
SOLIDWORKS FORMAT

SHEET 1 OF 2

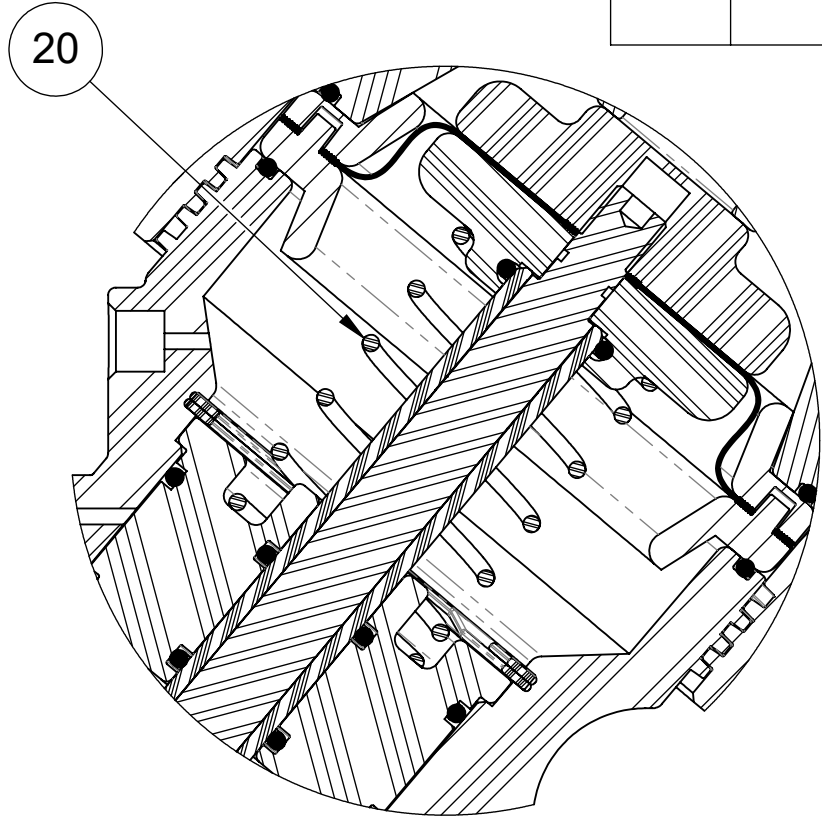
REVISIONS				
REV	ECN	DESCRIPTION		DATE
		SEE SHEET 1 FOR REVISION HISTORY		APP'D

REPAIR PARTS KITS		
DESCRIPTION	PART NO.	MODEL NO.
INT. PARTS KIT (SPRING ASSIST CLOSED) CONSISTS OF ITEM NO 20	1075236	535-S
INT. PARTS KIT (SPRING ASSIST OPEN) CONSISTS OF ITEM NO 20		
INT. PARTS KIT (LIMIT STOP) CONSISTS OF ITEM NO'S 21 - 23, 25	1075234	535-LS
INT. PARTS KIT (POSITION INDICATOR) CONSISTS OF ITEM NO'S 22, 23, 25 - 30	1075235	535-PI

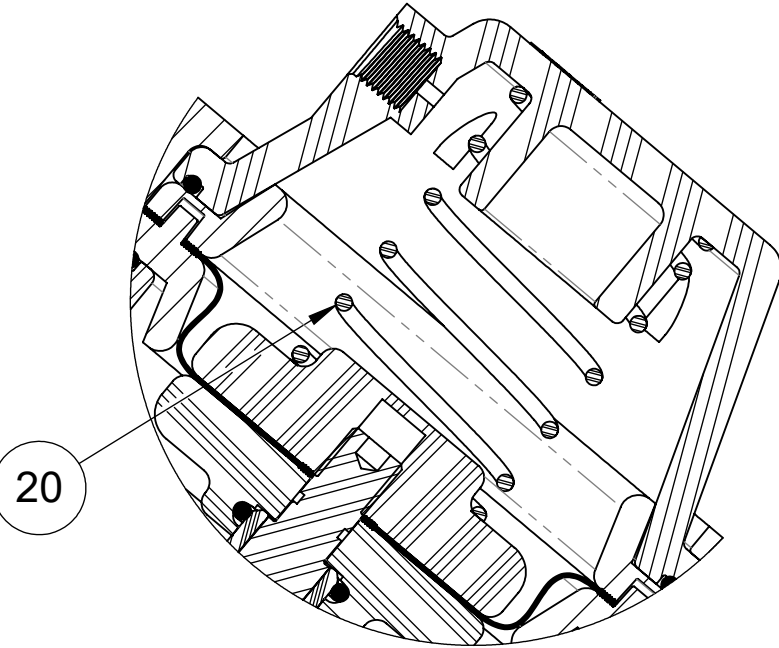
CONVERSION KITS		
DESCRIPTION	PART NO.	MODEL NO.
CONVERSION KIT (SPRING ASSIST CLOSED) CONSISTS OF ITEM NO 20	1075236	535-S
CONVERSION KIT (SPRING ASSIST OPEN) CONSISTS OF ITEM NO 20		
INT. PARTS KIT (LIMIT STOP) CONSISTS OF ITEM NO'S 11, 21 - 25	1071343	K535-LSC
INT. PARTS KIT (POSITION INDICATOR) CONSISTS OF ITEM NO'S 11, 22 - 30	1071344	K535-PIC



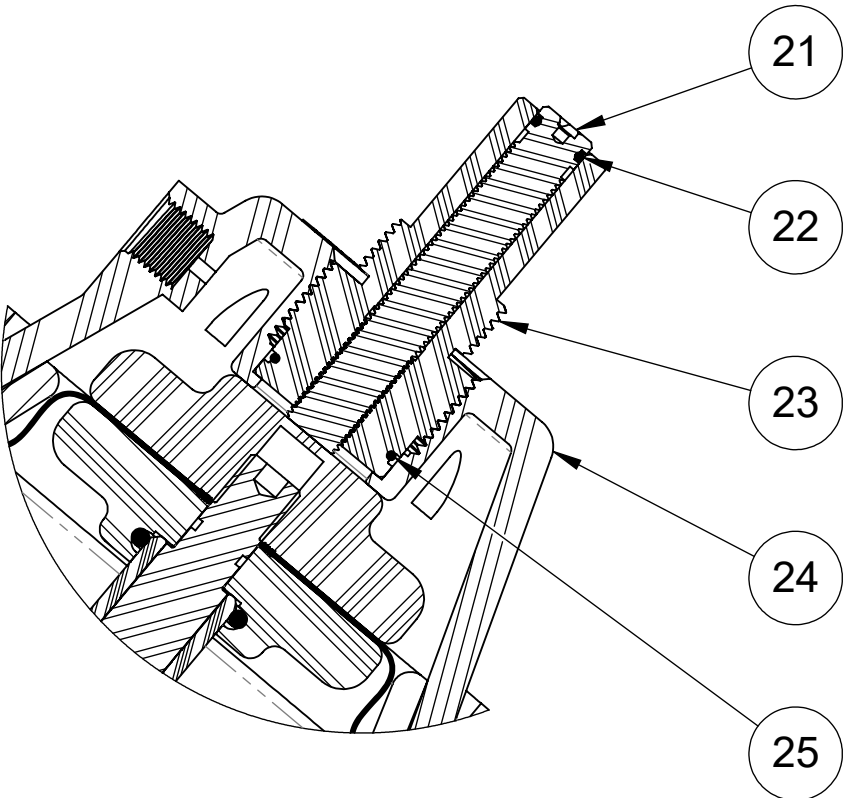
1071347 (K535-X2A1-14000)
LIMIT STOP / POSITION INDICATOR



1071365 (K535-X201-14000)
SPRING ASSIST OPEN



1071367 (K535-X202-14000)
SPRING ASSIST CLOSED



1070313 (K535-X210-14000)
LIMIT STOP

SPRING ASSIST OPEN/CLOSE MODEL				
ITEM NO.	PART NO.	MODEL	DESCRIPTION	QTY.
20	1073404	V535-170	SPRING, COMPRESSION, 535	1

LIMIT STOP MODEL				
ITEM NO.	PART NO.	MODEL	DESCRIPTION	QTY.
21	1073432	V535-576	SCREW, LIMIT STOP, 535	1
22	1071668	ORB-012	O-RING, 2-012	BUNA N 1
23	1073427	V535-570	GUIDE, LIMIT STOP , K535	1
24	1073408	V535-420K	CAP, VALVE, K535, LS/PI	1
25	1071676	ORB-024	O-RING, 2-024	BUNA N 1

POSITION INDICATOR MODEL				
ITEM NO.	PART NO.	MODEL	DESCRIPTION	QTY.
20	1073404	V535-170	SPRING, COMPRESSION, 535	1
22	1071668	ORB-012	O-RING, 2-012	BUNA N 1
23	1073427	V535-570	GUIDE, LIMIT STOP , K535	1
24	1073408	V535-420K	CAP, VALVE, K535, LS/PI	1
25	1071676	ORB-024	O-RING, 2-024	BUNA N 1
26	1073424	V535-550	SIGHT GLASS, 535	1
27	1073426	V535-555	INDICATOR, POSITION, K535	1
28	1073437	V535-700	LIMIT STOP ASSY, 535	1
29	1073409	V535-442	PLATE, DIAPHRAGM, UPR, PI, 535	1
30	1073438	V535-701	SHAFT ASSY, 535, LS/PI	1

SEE REVERSE SIDE FOR STANDARD NORMALLY OPEN MODEL.

THIS DOCUMENT IS SOLELY THE PROPERTY OF AQ-MATIC REPRODUCTION, USE DISCLOSURE, OR TRANSMISSION OF THIS DOCUMENT OR DETAILS CONTAINED HEREIN, IN PART OR IN WHOLE, IS PROHIBITED WITHOUT THE WRITTEN CONSENT OF AQ-MATIC ENGINEERING. THIS DOCUMENT AND ANY COPIES SHALL BE RETURNED TO AQ-MATIC UPON WRITTEN REQUEST.				
THIRD ANGLE PROJECTION		THE COMPONENT OR PRODUCT DESCRIBED IN THIS DOCUMENT MUST COMPLY WITH RoHS 3 EU (EUROPEAN UNION) DIRECTIVE 2015/863		
APPROVALS		DATE		
DRAWN		4/2/2021		
CHECKED BY				
APPROVED				
UNLESS OTHERWISE SPECIFIED: DIMENSIONS ARE IN INCHES (mm) CORNER FILLETS R.005-.020 (.127-.508) TOLERANCES: ANGLES : ± 1° 1 PLACE .X: ± .100 (2.54) 2 PLACE .XX: ± .010 (0.25) 3 PLACE .XXX: ± .005 (0.13)		AQ-MATIC VALVES AND CONTROLS		
DESCRIPTION		CATALOG SHEET, 535, VALVE		
SIZE		DWG NO. 1077690		REV. N
SCALE		1:1.5 SOLIDWORKS FORMAT		SHEET 2 OF 2